

Ecclestone Takes Critical Mineral Hit Lists to Task in the Hallgarten + Co Resource Monthly “Debasing Criticality’s Currency”

written by InvestorNews | April 3, 2024

In today’s monthly edition of Hallgarten & Co.’s “Resources Monthly” for March 2024, titled “Debasing Criticality’s Currency,” the firm offers an intricate analysis of the evolving landscape in the critical metals and minerals sector. The publication navigates through the performance of various commodities, assessing geopolitical impacts and strategic movements by both governments and corporations within the space.

Alphamin set to benefit from the ‘staggering’ 22.76% rising tin prices over the past month

written by InvestorNews | April 3, 2024

One of the bigger trends of 2023 looks like being the reopening of China following 3 years of the COVID-19 pandemic. There are several ways to play this thematic – Chinese funds/ETFs, iron ore, but how about tin? The tin price is up a staggering [22.76%](#) over the past month (at the time of writing).

Trading Economics [states](#): “Tin futures were trading around the \$30,000 per tonne mark, a level not seen since June 2022, as top consumer China made efforts to reopen and support its economy, thus lifting the outlook for demand.”

The 10 year tin price chart shows tin prices recovering in 2023 now at US\$29,536/t

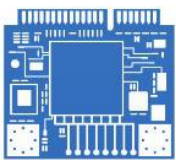


Source: [Trading Economics](#)

Tin is a key metal for the green energy transition as it is used in electric vehicles and solar panels. This is mostly because tin is used in solder ([49%](#) of tin demand comes from solder). Solder is used in practically every electronic product in the world today. As production and demand for consumer electronics recover in China that bodes well for tin prices.

Tin is the hidden green energy transition and consumer electronics metal of today and the future

Energy and technology will drive future tin demand



Computing and
robotics



Energy
generation



Autonomous and
electric vehicles



Energy
Storage



Energy
Infrastructure

Source: [International Tin Association](#)

Alphamin Resources Corp.

[Alphamin Resources Corp.](#) (TSXV: AFM) (Alphamin) currently produces [~4%](#) of the world's tin (Sn), or [~12,000tpa](#). Alphamin [state](#): “At a tin grade of roughly 4.5%, Mpama North is the

world's highest-grade tin resource – about four times higher than most other operating tin mines in the world.”

Alphamin is a low-cost tin concentrate producer from its high-grade deposit at Mpama North at their [84.1%](#) owned Bisie tin mine in the DRC.

The 2022 Resource estimate is an Indicated Resource of [0.84 million tonnes at 2.53% Sn](#) (21,400 contained tonnes of Sn) and an Inferred Resource of 4.99 million tonnes at 2.5% Sn (124,750 contained tonnes of Sn). Alphamin has recently managed to increase the Mpama North Resource as you can view in the video [here](#).

The exciting part is that Alphamin is a low cost producer so is nicely leveraged to tin prices. Even better is that Alphamin intends to expand the mine's production from 12,000tpa Sn to [~20,000tpa](#) Sn from FY2024, which would equate to about [7%](#) of the world's tin supply.

As [announced](#) in October 2022, Alphamin's Mpama South development project is progressing according to plan. Alphamin [stated](#): “The project is progressing on schedule for targeted commissioning in December 2023. Overall project completion is at 18.6%, and 84.3% of the procurement requirements have been finalised and ordered. The project is not expected to exceed its total cost estimate of US\$116 million.”

Alphamin's milestones and goals and Mpama North & Mpama South shown below

KEY MILESTONES ACHIEVED



Exploration to production in less than 6 years – now targeting production expansion and resource extensions



Source: [Alphamin company presentation](#)

Alphamin exploration continues

In addition to drilling for resource extensions at Mpama North and Mpama South, Alphamin is exploring for more tin deposits on its license areas. The Bisie Ridge Phase 1 new discovery has been accelerated with ~90 drill holes planned on six highly anomalous targets, following which a Phase 2 campaign will delineate any discoveries or else in fill the most prospective targets.

Closing remarks

Alphamin Resources is a pure tin play highly leveraged to the tin price. Being a low cost producer allows Alphamin to remain profitable throughout the tin price cycle. As China reopens early price indications are suggesting 2023 will be a good year for tin, and hence the quality tin miners.

If Alphamin can successfully bring on Mpama South into production and further grow their resource, then the outlook is

very bright for Alphamin this decade.

Alphamin Resources trades on a market cap of [C\\$1.273 billion](#) and a PE of [8.33](#). One to watch out for in 2023, especially if tin prices keep rising.

Market conditions offer temptations that critical mineral investors simply cannot ignore

written by InvestorNews | April 3, 2024

In this InvestorIntel interview, host Tracy Weslosky interviews [Hallgarten & Company](#)'s Principal and Mining Strategist Christopher Ecclestone about the impact of existing markets conditions on the critical minerals sector. Starting with an overview of existing market conditions and the impact of rising inflation and interest rates, Christopher says that the "current basement prices" in mining offer investors temptations they simply cannot ignore.

Tracy presses Christopher on these specific opportunities and requests examples of both his favorite critical minerals and companies investors may enjoy researching. Offering a top 3 hit list of critical minerals and offering 3 companies to review that have these resources, Christopher reinforces the theme that existing market conditions offer opportunities for those who are knowledgeable in this sector.

To access the full InvestorIntel interview, [click here](#)

Don't miss other InvestorIntel interviews. Subscribe to the InvestorIntel YouTube channel by [clicking here](#).

Disclaimer: This interview, which was produced by InvestorIntel Corp., (IIC), does not contain, nor does it purport to contain, a summary of all the material information concerning the "Company" being interviewed. IIC offers no representations or warranties that any of the information contained in this interview is accurate or complete.

This presentation may contain "forward-looking statements" within the meaning of applicable Canadian securities legislation. Forward-looking statements are based on the opinions and assumptions of the management of the Company as of the date made. They are inherently susceptible to uncertainty and other factors that could cause actual events/results to differ materially from these forward-looking statements. Additional risks and uncertainties, including those that the Company does not know about now or that it currently deems immaterial, may also adversely affect the Company's business or any investment therein.

Any projections given are principally intended for use as objectives and are not intended, and should not be taken, as assurances that the projected results will be obtained by the Company. The assumptions used may not prove to be accurate and a potential decline in the Company's financial condition or results of operations may negatively impact the value of its securities. Prospective investors are urged to review the Company's profile on [Sedar.com](#) and to carry out independent investigations in order to determine their interest in investing in the Company.

If you have any questions surrounding the content of this

interview, please contact us at +1 416 792 8228 and/or email us direct at info@investorintel.com.

Maritz Smith of Alphamin Resources talks about its updated tin resource at its Mpama North Mine

written by InvestorNews | April 3, 2024

In this InvestorIntel interview, host Tracy Weslosky talks to [Alphamin Resources Corp.](#)'s (TSXV: AFM) CEO Maritz Smith about their recent news, including an updated Mineral Resource Estimate (MRE) and Mineral Reserve estimation for their Mpama North Mine and a declared dividend for shareholders. Alphamin produces about 4% of the world's mined tin from its high-grade operation in the Democratic Republic of Congo.

In the interview, which can also be viewed in full on the InvestorIntel YouTube channel ([click here to access InvestorChannel.com](#)), Maritz tells InvestorIntel that the result of Alphamin's updated Mineral Resource and Mineral Reserve estimates and updated life of mine schedule is that all contained tin depleted by mining since 31 December 2019 has been replaced in the new LoM schedule for the Mpama North Mine. "The Mpama North mine is really the backbone for where we want to go," Maritz says. "This mine was commissioned in 2019 we increased its production from around 10,000 tonnes of tin a year to 12,000 tonnes of tin a year, and it's important that this

mine continues to deliver consistently for us in terms of production and sales.”

In a market that having trouble keeping up with tin demand, Maritz says that “we are on a growth path of unlocking additional tin resources which will lead to additional tin production... because we believe the tin market has a significant supply issue.”

Talking about the recent dividends paid by Alphamin, Maritz tells Tracy that “in addition to our various growth initiatives which we’re funding organically from our balance sheet, we have commenced declaring dividends to our shareholders” with the first dividend declared in February 2022 and a second “At the moment we’re running at about an eight percent dividend yield.”

To access the full InvestorIntel interview, [click here](#)

Don’t miss other InvestorIntel interviews. Subscribe to the InvestorIntel YouTube channel by [clicking here](#).

About Alphamin Resources Corp.

Alphamin Resources is a low-cost tin concentrate producer from its high-grade deposit at Mpama North. This is on its mining license, and it has an additional five exploration licenses covering a total of 1,270km² in the North Kivu Province of the Democratic Republic of Congo (DRC). Alphamin is headquartered in Mauritius and listed both on the Toronto Stock Exchange (TSXV: AFM) and on the Johannesburg Stock Exchange AltX (JSE AltX: APH). At a tin grade of roughly 4.5%, Mpama North is the world’s highest-grade producing tin resource – about four times higher than most other operating tin mines in the world. The Mpama North mine is in production. It has an output of ~10 000 tonnes of contained tin per annum, amounting to ~3% of the world’s mined tin supply. Alphamin is aiming to increase annual tin

output and life of mine through incremental production from Mpama South and by adding more mines in close proximity to the current producer from within its licensed footprint. The management team has successfully developed and brought the Bisie tin mine into production and is focused on taking the business to the next level as they pursue their objective of realizing the full value potential of this extraordinary tin complex.

To learn more about Alphamin Resources Corp., [click here](#)

Disclaimer: *Alphamin Resources Corp. is an advertorial member of InvestorIntel Corp.*

This interview, which was produced by InvestorIntel Corp., (IIC), does not contain, nor does it purport to contain, a summary of all the material information concerning the “Company” being interviewed. IIC offers no representations or warranties that any of the information contained in this interview is accurate or complete.

This presentation may contain “forward-looking statements” within the meaning of applicable Canadian securities legislation. Forward-looking statements are based on the opinions and assumptions of the management of the Company as of the date made. They are inherently susceptible to uncertainty and other factors that could cause actual events/results to differ materially from these forward-looking statements. Additional risks and uncertainties, including those that the Company does not know about now or that it currently deems immaterial, may also adversely affect the Company’s business or any investment therein.

Any projections given are principally intended for use as objectives and are not intended, and should not be taken, as assurances that the projected results will be obtained by the Company. The assumptions used may not prove to be accurate and a

potential decline in the Company's financial condition or results of operations may negatively impact the value of its securities. Prospective investors are urged to review the Company's profile on [Sedar.com](https://www.sedar.com) and to carry out independent investigations in order to determine their interest in investing in the Company.

If you have any questions surrounding the content of this interview, please contact us at +1 416 792 8228 and/or email us direct at info@investorintel.com.

Neo Performance Materials and Uranium Sector Leads this Week-in-Review...

written by Tracy Weslosky | April 3, 2024

"US Futures are down across the board, with no new economic data or major earnings expected. Investors are looking to the August jobs report, scheduled for Friday, as they weigh up how big a rate hike could be coming from the Fed in September."

Last week saw equity markets close the last week on a down note, as all three major U.S. indexes sold off sharply for their worst closes in months after Federal Reserve Chairman Jerome Powell said the central bank would continue fighting inflation with rate increases. Don't expect much in the way of a reprieve in early trading as we get the day under way." – Kevin Thomsen, Morning Chatter for August 29, 2022

Friday was an intense day of speculation and discussion in the rare earths sector. With breaking news early AM with [Agreement to acquire strategic shareholding in Neo Performance Materials and cornerstone investment in Hastings by Wyloo Metals](#), Christopher Ecclestone put out a piece on InvestorIntel titled [Neo Performance and Hastings – Will Wonders Never Cease?](#) – that was followed later that day, with a second announcement [Neo Performance Materials Announces \\$67.5 Million Bought Deal Treasury Offering of Common Shares.](#)

Allow me to remind you that Constantine Karayannopoulos will be the luncheon speaker at the [Critical Minerals Institute](#)'s summit scheduled for Wednesday, November 9, 2022.

This morning, we see indicators that the uranium sector has interest, we coincidentally have a headline story written by Jack Lifton titled [Are we slaves to Russian uranium processing?](#) It seems we are in the right place at the right time as we start out the InvestorTalk.com schedule this week with 2 uranium companies... followed by an antimony story on Thursday.

[InvestorTalk.com](#) line-up for this week:

- 9-9:20 AM EST, Tuesday, August 30, 2022 – InvestorTalk.com with John Cash from **Ur-Energy Inc.** (NYSE American: URG | TSX: URE), [click here to register](#)
- 9-9:20 AM EST, Wednesday, August 31, 2022 – InvestorTalk.com with Dev Randhawa from **Fission 3.0 Corp.** (TSXV: FUU | OTCQB: FISOF), [click here to register](#)
- 9-9:20 AM EST, Thursday, September 1, 2022 – InvestorTalk.com with Christopher Ecclestone from **Molten Metals Corp.** (CSE: MOLT), [click here to register](#)

Now for some highlights from the Week-in-Review for the week of August 22-26, 2022 –

The Top 10 Trending Columns on InvestorIntel.com for the last 30-days include:

1. [Nano One's cathode materials are inventing the zero-emission battery future](#)
2. [Announcing the Launch of the Critical Minerals Institute for Companies and Experts Focused on Electric Vehicles, Green Energy and Secure Supply Chains](#)
3. [The King of Tin is Alphamin](#)
4. [Rare earths expert Alastair Neill on Vital Metals](#)
5. [Lynas Bets \\$500 Million on Rare Earths Market Expansion](#)
6. [Zentek sets its sights on treating skin conditions as it expands potential uses for its ZenGUARD graphene coating](#)
7. [Eye on the price of uranium, Cameco brings crown jewel back into production and Ur-Energy is set to go.](#)
8. [Molybdenum – securing a domestic supply of the vital but underappreciated mineral](#)
9. [A titan of titanium – with a big HAMR](#)
10. [Valeo Pharma's Steve Saviuk talks about the US\\$40M non-dilutive financing from Sagard Healthcare Partners](#)

InvestorIntel Columns to REVIEW:

- August 26, 2022 – [Neo Performance and Hastings – Will Wonders Never Cease?](#)
- August 25, 2022 – [The Dean's List – Part 6: What cobalt companies could benefit from Canada's commitment to critical minerals?](#)
- August 24, 2022 – [dynaCERT puts its carbon emission reduction technology to the test](#)
- August 23, 2022 – [Mining our way to the Green Revolution](#)
- August 22, 2022 – [Musk Twitter Deal, Predatory Short Selling Takes a Hit and Rethinking Greenland Rare Earths](#)

[in this Week-in-Review...](#)

- August 22, 2022 – [Greenwashing – It's not easy pretending to be green](#)

ii8 System News Releases for the Week in Review for August 22-26, 2022:

- August 26, 2022 – [West Red Lake Gold Closes \\$4,100,000 Flow Through Financing](#)
- August 26, 2022 – [Neo Performance Materials Announces \\$67.5 Million Bought Deal Treasury Offering of Common Shares](#)
- August 26, 2022 – [Agreement to acquire strategic shareholding in Neo Performance Materials and cornerstone investment in Hastings by Wyloo Metals](#)
- August 25, 2022 – [Awakn Life Sciences Signs Agreement with a Leading Drug Development Company to Deepen IP Moat for Its Lead Program](#)
- August 25, 2022 – [Rackla Metals focuses on Tombstone intrusive related gold](#)
- August 25, 2022 – [dynaCERT Advances its Verified Carbon Standard Application with Verra](#)
- August 25, 2022 – [Completion of Institutional Placement](#)
- August 24, 2022 – [Westward Gold Completes Turquoise Canyon Anniversary Payment](#)
- August 24, 2022 – [Molten Metals Corp. Announces Formation of Strategic Advisory Board](#)
- August 24, 2022 – [Bald Eagle Announces Exchange Approval for Name Change to Hercules Silver Corp. and Provides Exploration Update](#)
- August 23, 2022 – [Molten Metals Samples 39.4% Antimony \(Sb\) and 9.69g/t Au, at Tienesgrund, Slovakia](#)
- August 23, 2022 – [TrustBIX Inc. Announces June 30, 2022 Third Quarter Financial Results](#)

- August 23, 2022 – [Auxico Signs Offtake Agreement for Tin Concentrate from the Massangana Tin Tailings Project in Brazil](#)
 - August 23, 2022 – [DOE Funds Next-Generation Rare Earths Processing Research Collaboration](#)
 - August 23, 2022 – [Silver Bullet Mines Corp. Updates on Washington Mine in Idaho](#)
 - August 23, 2022 – [Nano One Receives C\\$1.8M towards SDTC Milestone 4 and Granted 2 Patents](#)
 - August 22, 2022 – [Hemostemix Announces Closing of UNIT Private Placement](#)
 - August 22, 2022 – [Hudson Resources And Neo Performance Materials Sign Agreement On The Sarfartoq Rare Earth Element Project In Greenland](#)
 - August 22, 2022 – [dynaCERT to Equip the City of Timmins with Winterized Carbon Emission Reduction Technology](#)
-

The King of Tin is Alphamin

written by InvestorNews | April 3, 2024

When I [last wrote](#) about one of the highest grade tin producers, with production of roughly 4% of global volume, their share price was C\$0.69/share. That was in July, 2021. Yesterday, this company's stock closed at, wait for it, C\$0.69/share. What have they done in the interim? Increase cash and cash equivalents by US\$124 million to US\$147 million, reduce debt to almost zero (US\$9 million at June 30, 2022), declare a dividend of roughly 4% and announce plans to increase production to 6% of global volume by 2024. Naturally, this left me a little confused, so I think we should have a closer look at what's going on here.

The company in question is [Alphamin Resources Corp.](#) (TSX: AFM), a low cost tin concentrate producer from its high grade deposit at [Mpama North](#) on its mining and exploration licenses covering a total of 1,270km² in the North Kivu Province of the Democratic Republic of the Congo (DRC). At a tin grade of roughly 4.5%, Mpama North is the world's highest-grade tin resource – about four times higher than most other operating tin mines in the world. It is also one of the largest tin mines outside of China or Indonesia.

The Company recently announced [Q2 results](#), which were very positive, showing quarter-over-quarter growth in ore processed (+7%), tin produced (+4%) and a reduction in AISC (-7%). A slightly lower tin grade processed for the quarter (-2%) coupled with a materially lower price (-19%) led to a marked drop in EBITDA (-32%). But we're still talking about a very positive quarter which allowed the Company to add US\$6.5 million to cash and cash equivalents even after an incremental tax hit of US\$11.7 million due to a special "superprofit tax" applied by the Democratic Republic of the Congo (DRC). And on top of this Alphamin announced an interim dividend for FY 2022 of C\$0.03/share. I like their use of the term "interim" as it implies, at least to me, that there could be more to come before the year is over.

As part of corporate plans to further expand production, this week the Company announced an [updated Mineral Resource](#) and Mineral Reserve estimates along with an updated life of mine schedule (LoM) for the Mpama North Mine. Without getting into all the numbers, the press release can be summarized by saying all the work Alphamin has done has resulted in all contained tin depleted since December 31, 2019 has been replaced in the new LoM schedule. The 154.5kt contained tin in the updated LoM versus the previous 154.2kt has also been accompanied by a

valuable grade increase of 19.6% to 4.78% Sn from 4.00% Sn previously scheduled. In a nutshell, before we even get into the reserve adds from the Mpama South project, Alphamin is expanding Mpama North as quickly as it is mining it. I find this reasonably impressive when you consider it accounts for 4% of global production.

As for Mpama South, the Company stated with its [Q2 guidance](#) that exploration drilling delivered an additional 124,700t contained tin in inferred Resource and 21,400t contained tin in indicated Resource at Mpama South. Mine development of the Mpama South deposit (adjacent to Mpama North) has commenced and is expected to increase annual contained tin production from the current 12,000tpa to ~20,000tpa, approximating 6.6% of the world's mined tin, effective FY2024. This is critical given Alphamin states that according to the International Tin Association there is a tin supply deficit forecast for the foreseeable future.

I couldn't find this forecast myself (perhaps it's behind a pay wall), however, the logic behind it seems sound. Four countries currently produce 75% of global tin concentrate and they all appear to be facing some sort of headwind. Chinese mines are maturing and are facing stricter environmental laws (but the cynic in me would suggest the latter is only an issue in a balanced to over supplied market).

Indonesian on-shore mining is declining and export bans are looming. Myanmar's high-grade surface material is almost depleted and they are now moving into lower grade underground mines, which completely overlooks the political turmoil where the military junta is simply [executing anyone opposing them](#). And Peru has commissioned tailings retreatment in an attempt to restore their declining production profile to levels from 10 years ago.



Source: [International Tin Association](#)

Returning to my opening challenge of why is it that the stock price is the same as 13 months ago, all I can suggest is that perhaps it's the fact that tin prices today are US\$24,675/t versus the July 15, 2021 close of US\$33,510. If you are simply trading Alphamin as a proxy for tin prices then I guess it sort of makes sense that all the success the Company has achieved over the last year is offset by lower commodity prices – this formula is perhaps reasonable.

Strong tin prices, new PEA and major expansion plan boost Alphamin Resources' already strong revenues

written by InvestorNews | April 3, 2024

[Tin prices](#) have dipped recently but are still up over 100% from where they were just two and a half years ago. This means that tin producers continue to do extremely well in this high price environment.

Today's company has been achieving near record tin production and selling prices. This has resulted in very strong revenue and EBITDA results over the past year. Plus they have been growing their resource and have plans to further expand production.

The company is [Alphamin Resources Corp.](#) (TSXV: AFM) (Alphamin). Alphamin is a high grade, low cost, tin concentrate producer at its Mpama North Mine in the Democratic Republic of Congo (DRC). Alphamin has the highest grade tin resource globally with a Resource Reserve of [3.33MT @ 4.01% Sn \(tin\) resulting in 133.4 kt of contained tin](#). Alphamin's production equates to ~[4%](#) of the world's mined tin.

Near-record tin production, sales and EBITDA in 2021 and Q1, 2022

As [reported](#) on May 13, 2022, Alphamin achieved 3,061 tonnes of tin production in Q1, 2022, boosted by recoveries improving from 75% to 78%. Contained tin sales increased by 9% to 3,336 tonnes at an average tin price of US\$43,834/t. The AISC of contained tin sold during Q1 2022 increased by 4% to US\$15,782/t. Alphamin [stated](#): "As a result of steady production, good cost control and higher revenue, EBITDA for Q1 2022 amounted to US\$98.1 million, up 32% from US\$74.3 million the previous quarter."

Growing their resource at Mpama South

As [announced](#) on April 4, 2022, Alphamin increased the Inferred Resource at Mpama South by 75%. The Mpama South Mineral Resource is now an Indicated 0.85Mt @ 2.55% Sn (21.5kt contained tin) and Inferred 3.42Mt @ 2.45% Sn (83.7kt contained tin).

Mpama North also had some excellent recent drill results from hole MND019: [14.4 metres @ 21.75% Sn from 432.2 metres](#), including 11.0 metres @ 27.81% from 432.2 metres.

Mpama South resource model



Source: [Alphamin Resources news April 4, 2022](#)

Mpama PEA and tin production expansion plans

Alphamin announced a very positive PEA for Mpama South on March 7, 2022. Alphamin CEO Maritz Smith [commented](#):

“We are delighted to declare a Maiden Mineral Resource estimate and the outcome of a PEA study on Mpama South. The PEA quantifies the potentially value accretive economics of expanding production with the development of the adjacent Mpama South mine. Our current producing Mpama North mine absorbs large fixed costs, which facilitates incremental production from Mpama South at a competitive marginal cost. Developing Mpama South would bring Alphamin closer to its vision of becoming one of the world’s largest low-cost tin producers.”

Alphamin announced a positive PEA for the Mpama South project



Source: [Alphamin news on March 7, 2022](#)

Alphamin plans to increase annual contained tin production from the current 12,000tpa to [~20,000tpa](#) (from FY2024), which equates to ~6.6% of the world’s mined tin. The estimated capital development cost is [US\\$116 million](#). First tin production from Mpama South is targeted for [December 2023](#).

Closing remarks

Alphamin has been producing strong revenues from tin production at their DRC tin mine. All of this has allowed the Company to rapidly grow their resource and announce a very large expansion plan from 12,000tpa to 20,000tpa, set to begin ramping from December 2023. This equates to a 66% increase in production.

Looking at Alphamin’s market cap it is currently at [C\\$1.27 billion](#) and trades on a 2022 PE of only [6.59](#), partially due to

tin prices being lower in 2022. Not bad for a company set to rapidly grow production in 2024. Some increased risk due to the DRC location. Stay tuned.

Maritz Smith on Alphamin Resources' extraordinary low-cost high-grade producing tin mines

written by InvestorNews | April 3, 2024

In a recent InvestorIntel interview, Byron King spoke with Maritz Smith, CEO of [Alphamin Resources Corp.](#) (TSXV: AFM) about achieving record [fourth quarter EBITDA and production](#), and about how Alphamin is positioned to become one of the world's largest low-cost tin producers.

In this InvestorIntel interview, which may also be viewed on YouTube ([click here to subscribe to the InvestorIntel Channel](#)), Maritz Smith said that tin is a strategic metal "without which technology cannot exist" and went on to highlight the supply constraints in the tin market because of decades of underinvestment in exploration and development of new tin mines. "Alphamin's mine is the first major tin mine that has been developed in the last 40 years," he added. As a producer of 4% of the world's mined tin, Maritz provided an update on Alphamin's maiden [mineral resource estimate](#) and positive PEA for their Mpama South Mine.

To watch the full interview, [click here](#).

About Alphamin Resources Corp.

Alphamin Resources is a low-cost tin concentrate producer from its high-grade deposit at Mpama North. This is on its mining license, and it has an additional five exploration licenses covering a total of 1,270km² in the North Kivu Province of the Democratic Republic of Congo (DRC). Alphamin is headquartered in Mauritius and listed both on the Toronto Stock Exchange (TSXV: AFM) and on the Johannesburg Stock Exchange AltX (JSE AltX: APH). At a tin grade of roughly 4.5%, Mpama North is the world's highest-grade producing tin resource – about four times higher than most other operating tin mines in the world. The Mpama North mine is in production. It has an output of ~10 000 tonnes of contained tin per annum, amounting to ~3% of the world's mined tin supply. Alphamin is aiming to increase annual tin output and life of mine through incremental production from Mpama South and by adding more mines in close proximity to the current producer from within its licensed footprint. The management team has successfully developed and brought the Bisie tin mine into production and is focused on taking the business to the next level as they pursue their objective of realizing the full value potential of this extraordinary tin complex.

To learn more about Alphamin Resources Corp., [click here](#)

Disclaimer: Alphamin Resources Corp. is an advertorial member of InvestorIntel Corp.

This interview, which was produced by InvestorIntel Corp., (IIC), does not contain, nor does it purport to contain, a summary of all the material information concerning the “Company” being interviewed. IIC offers no representations or warranties that any of the information contained in this interview is

accurate or complete.

This presentation may contain “forward-looking statements” within the meaning of applicable Canadian securities legislation. Forward-looking statements are based on the opinions and assumptions of the management of the Company as of the date made. They are inherently susceptible to uncertainty and other factors that could cause actual events/results to differ materially from these forward-looking statements. Additional risks and uncertainties, including those that the Company does not know about now or that it currently deems immaterial, may also adversely affect the Company’s business or any investment therein.

Any projections given are principally intended for use as objectives and are not intended, and should not be taken, as assurances that the projected results will be obtained by the Company. The assumptions used may not prove to be accurate and a potential decline in the Company’s financial condition or results of operations may negatively impact the value of its securities. Prospective investors are urged to review the Company’s profile on [Sedar.com](https://www.sedar.com) and to carry out independent investigations in order to determine their interest in investing in the Company.

If you have any questions surrounding the content of this interview, please contact us at +1 416 792 8228 and/or email us direct at info@investorintel.com.

With the price of tin skyrocketing, investors eye the high grades of Alphamin

written by InvestorNews | April 3, 2024

The tin price boom continues with the price now at [US\\$43,023/t](#), up ~3.5x from the 2020 low. The main drivers have been surging tin demand from the electronics and green energy sectors and a limited supply.

Tin is mostly used as solder, particularly in photovoltaic installations, electric vehicles, and electronics. The good thing about tin is that tin solder prices can go up, but that, so far, has had minimal impact on a company's costs. The biggest producers of tin are China, Malaysia, Indonesia, Peru, Thailand, Bolivia and Myanmar.

According to the International Tin Association ("ITA"), the global tin market [deficit is forecast to rise to 12,700t in 2022](#), from a 10,200t deficit in 2021. The ITA says that a [US\\$30,000/t](#) tin price is required to incentivize additional supply in response to demand growth.

Today's company is riding the wave of the tin price boom with increasing production from its Mpama North Mine in the Democratic Republic of Congo, DRC.

Tin prices – 10 year chart



Source: [Trading Economics](#)

[Alphamin Resources Corp.](#) (TSXV: AFM) ("Alphamin") stock price is

up exactly [100%](#) in the past year thanks to booming tin prices and its growing production.

Alphamin is a high grade, low cost, tin concentrate producer at its Mpama North Mine in the Democratic Republic of Congo (DRC). Alphamin has the highest-grade tin resource, globally, with a Resource Reserve of [3.33MT @ 4.01% Sn \(tin\) resulting in 133.4 kt of contained tin](#). Alphamin's production equates to [~4%](#) of the world's mined tin.

Alphamin state:



Source: [Alphamin website](#)

Q4, 2021 results from Alphamin were a knockout. The Company [announced](#) the following:

- **“Contained tin production up 10% from the prior quarter to 3,114 tons**
- **Contained tin sales up 13% from the prior quarter to 3,056 tons**
- **Record Q4 EBITDA⁴ guidance of US\$74 million, up 38% from prior quarter actual**
- **Net cash position increases to US\$68 million**
- **FY2021 dividend of CAD\$0.03 per share declared.”**

The 3,114 tons in Q4 2021 puts Alphamin on an annual run rate of 12,456 tons pa. At current spot prices of US\$43,023 Alphamin would be on track for another year of record revenues (~US\$535 million) in 2022. In the above Q4 release the Company guided cautiously for 12,000t of production in 2022. There was also mention of an ongoing drilling campaign with six rigs on-site.

On February 1, 2022, Alphamin [announced](#) the results of the

above-mentioned drilling campaign. Results were again spectacular and included:

- **“Mpama South high-grade assay results²** received, including BGH079 which is the best drillhole assayed to date at Mpama South by contained tin: BGH079: **15.6 metres @ 5.00% Sn** from 290.2 metres, **including 10.0 metres @ 6.1% from 291.1 metres.....**
- **Mpama North high-grade assay results²** received, including MND011 which is the second best drillhole assayed to date at Mpama North by contained tin: MND011: **19.6 metres @ 17.16% Sn** from 419.3 metres, **including 14.5 metres @ 23.0%.”**

Imagine the excitement drilling “14.5 metres @ 23.0% tin (“Sn”) when tin prices are at US\$43,023/t.

Mpama South is shaping up to potentially be another large high-grade resource – Maiden Resource due soon



Source: [Alphamin news Feb. 1, 2022](#)

Next steps

The next step for Alphamin is the release of a Maiden Mineral Resource estimation for Mpama South due in Q1 2022. Following this will be quarterly results throughout 2022.

Alphamin investment highlights



Source: [Alphamin company presentation](#)

Closing remarks

It is a great time to be a tin producer. Even better if you are a high-grade, low-cost, tin producer expanding production. And even better again if you can drill into 23% tin grades and grow your resource.

2022 is shaping up to be another very good year for Alphamin Resources. The Company trades on a market cap of [~US\\$1.3 billion](#) up over 36% on when [I wrote on them](#) in Sept. 2021 on a then market cap of C\$953 million. Stay tuned for the Mpama South Maiden Resource release soon.

Maritz Smith on the global shortage of tin and Alphamin's record Q3 EBITDA

written by InvestorNews | April 3, 2024

In a recent InvestorIntel interview, Tracy Weslosky spoke with Maritz Smith, CEO of [Alphamin Resources Corp.](#) (TSXV: AFM) about Alphamin's recent [news release](#) on achieving record Q3 EBITDA, and about its net debt free position supported by rising tin prices and increased tin production at Alphamin's Mpama North Mine.

In this InvestorIntel interview, which may also be viewed on YouTube ([click here to subscribe to the InvestorIntel Channel](#)), Maritz Smith said that, primarily used for soldering circuit board connections, tin is the glue that holds our technology, as well as circuit boards, together, but that there is a global shortage of tin at the moment because of decades of limited

investment in tin exploration. Currently producing 4% of the world's tin, Maritz said that Alphamin is well-positioned to capitalize on the growth potential in the tin market and ultimately fill a substantial portion of the supply gap going forward.

To watch the full interview, [click here](#).

About Alphamin Resources Corp.

Alphamin Resources is a low cost tin concentrate producer from its high grade deposit at Mpama North. This is on its mining license and it has an additional five exploration licenses covering a total of 1,270km² in the North Kivu Province of the Democratic Republic of Congo (DRC). Alphamin is headquartered in Mauritius and listed both on the Toronto Stock Exchange (TSXV: AFM) and on the Johannesburg Stock Exchange AltX (JSE AltX: APH). At a tin grade of roughly 4.5%, Mpama North is the world's highest-grade producing tin resource – about four times higher than most other operating tin mines in the world. The Mpama North mine is in production. It has an output of ~10 000 tonnes of contained tin per annum, amounting to ~3% of the world's mined tin supply. Alphamin is aiming to increase annual tin output and life of mine through incremental production from Mpama South and by adding more mines in close proximity to the current production and from within its licensed footprint. The management team has successfully developed and brought the Bisie tin mine into production and is focused on taking the business to the next level as they pursue their objective of realizing the full value potential of this extraordinary tin complex.

To learn more about Alphamin Resources Corp., [click here](#)

Disclaimer: Alphamin Resources Corp. is an advertorial member of InvestorIntel Corp.

This interview, which was produced by InvestorIntel Corp. (IIC) does not contain, nor does it purport to contain, a summary of all the material information concerning the “Company” being interviewed. IIC offers no representations or warranties that any of the information contained in this interview is accurate or complete.

This presentation may contain “forward-looking statements” within the meaning of applicable Canadian securities legislation. Forward-looking statements are based on the opinions and assumptions of management of the Company as of the date made. They are inherently susceptible to uncertainty and other factors that could cause actual events/results to differ materially from these forward-looking statements. Additional risks and uncertainties, including those that the Company does not know about now or that it currently deems immaterial, may also adversely affect the Company’s business or any investment therein.

Any projections given are principally intended for use as objectives and are not intended, and should not be taken, as assurances that the projected results will be obtained by the Company. The assumptions used may not prove to be accurate and a potential decline in the Company’s financial condition or results of operations may negatively impact the value of its securities. Prospective investors are urged to review the Company’s profile on [Sedar.com](https://www.sedar.com) and to carry out independent investigations in order to determine their interest in investing in the Company.

If you have any questions surrounding the content of this interview, please email info@investorintel.com.