

Lomiko Announces Remaining Results From the Exploration Drill Program at La Loutre Graphite Property in Québec, Drills up to 10.37 % Cg over 64.0m at end of Battery Zone along Southeastern Margin

written by Raj Shah | December 13, 2022

December 13, 2022 ([Source](#)) – **Lomiko Metals Inc. (TSX.V: LMR)** (“Lomiko Metals” or the “Company”) is pleased to announce the eighth and final round of analytical results from the infill and extension exploration drill program at its La Loutre Graphite property, located approximately 180 kilometres northwest of Montréal in the Laurentian region of Québec. The La Loutre graphite project site is located within the Kitigan Zibi Anishinabeg (KZA) First Nations territory.

Belinda Labatte, CEO and Director stated: “We are pleased that these assays further confirm the results of the infill and expansion programs encountered so far. Significant intervals were encountered in the third and last batch of results from the Battery Zone, including 10 holes (LL-22-70 to 79) in the south end of the Battery Zone. The assay results further validate the continuity and quality of the mineralization. The best interval of 10.37% Cg over 64.0m was encountered in hole LL-22-074 including 14.15% Cg over 14.5m. We look forward to receiving the results from the shoulder sampling conducted in November in the EV and Battery Zones, to complete the drill database. The

database would be used to start with the NI-43-101 compliant mineral resource estimate.”

Highlights

Assay results from the third and last batch of 10 of 26 holes drilled at Battery Zone:

- Consistent, near surface graphite mineralization along the southwest margin of the Battery Zone
- Strong graphite values and significant widths in all 10 drill holes
- **Best interval of 10.37% Cg over 64.0m from 27.0 to 91.0m in hole LL-22-074 including 14.15% Cg over 14.5m from 45.0 to 90.0m**
- **Second best interval of 11.42% Cg over 26.5m from 48.0 to 74.5m including 15.01% Cg over 13.5 from 51.0 to 64.5m and 17.16% Cg over 5.5m from 69.0 to 74.5m in hole LL-22-073**
- **Battery zone remains open on the south end.**

The drilling was supervised by Québec-based, independent geological consultant Breakaway Exploration Management Inc. and was operated under ECOLOGO requirements and compliance protocols, as Lomiko is ECOLOGO certified. Please see the [press release issued on March 23, 2022](#) for more details about Lomiko’s ECOLOGO certification.

The drill program at La Loutre was initiated on May 15, 2022, with the goal to further define the deposit, provide the data needed to increase confidence in the mineral resource and build on the results of the positive Preliminary Economic Assessment (“PEA”) for the La Loutre project [as announced in the Company’s July 29, 2021 press release](#). Lomiko has retained InnovExplo Inc, a Quebec-based independent consulting firm specializing in geology, resource estimation, mining engineering and sustainable

development, to prepare an updated NI 43-101 compliant resource estimate for the La Loutre project following the completion of the 2022 drill program.

The assay results reported in this press release are for the 10 holes drilled at the south end of the Battery Zone. These holes were drilled to confirm results of previous drilling and provide better detail in this part of the Battery deposit. Please refer to Table 1 for the weighted averaged graphitic carbon-bearing drill intersections (not true thickness) and Table 2 and Figure 1 for the collar locations referred to in this press release.

Significant intervals of graphite mineralization were intersected in all 10 holes. The best intersection was 10.37 per cent graphite (“%Cg”) over 64.0m from 27.0 to 91.0m in hole LL-22-074 including 14.15% Cg over 45m from 45.0 to 90.0m. The second-best interval was 11.42% Cg over 26.5m from 48.0 to 74.5m including 15.01% Cg over 13.5 from 51.0 to 64.5m and 17.16% Cg over 5.5m from 69.0 to 74.5 in hole LL-22-073. These two holes as well as holes LL-22-077, LL-22-078 and LL-22-079 form the southernmost extent of the Battery Zone. The robust dimensions and tenor of the strong intervals intersected in these holes suggests that the intervals continue further to the southeast, and that the Battery zone remains open in that direction.

Generally, it was noted that the graphite mineralization intersected in the Battery zone is visually more coarse-grained than the graphite mineralization intersected at the recently drilled EV Zone.

Table 1: Weight averaged graphitic carbon-bearing drill intersections (not true thickness)

Hole	From m	To m	Int. m	% Cg	Notes
LL-22-070	21.4	48.4	27.0	8.17	Sampling complete

Including	31.9	43.9	12.0	12.75	
	65.0	96.1	31.1	5.06	
Including	87.5	96.1	8.6	8.78	
	136.9	157.2	20.3	1.09	
	167.8	190.3	22.5	1.22	
LL-22-071	62.3	188.5	126.2	1.38	Sampling complete
Including	62.3	75.8	13.5	5.95	
Including	180.5	188.5	8.0	2.07	
LL-22-072	51.9	85.0	33.1	9.70	Sampling complete
Including	58.0	83.5	25.5	12.14	
	118.5	195.0	76.5	1.56	
Including	118.5	135.0	16.5	3.59	
LL-22-073	48.0	74.5	26.5	11.42	Sampling complete
Including	51.0	64.5	13.5	15.01	
Including	69.0	74.5	5.5	17.16	
	118.0	189.2	71.2	1.44	
Including	122.5	130.0	7.5	4.56	
LL-22-074	27.0	91.0	64.0	10.37	Sampling complete
Including	45.0	90.0	45.0	14.15	
LL-22-075	36.3	57.3	21.0	9.88	Sampling complete
Including	37.8	48.3	10.5	17.23	
	76.0	112.0	36.0	9.30	
Including	91.0	104.5	13.5	16.22	
	152.0	223.1	71.1	1.31	
Including	152.0	162.5	10.5	3.15	
LL-22-076	55.5	69.0	13.5	9.27	Sampling complete
Including	55.5	64.5	9.0	12.94	

	120.8	138.0	17.2	2.31	
Including	122.3	129.8	7.5	4.84	
LL-22-077	41.0	54.5	13.5	10.75	Sampling complete
Including	42.5	51.5	9.0	13.37	
	109.3	113.8	4.5	4.81	
LL-22-078	63.8	71.3	7.5	10.86	Sampling complete
Including	63.8	68.3	4.5	15.13	
LL-22-079	68.2	99.7	31.5	4.00	Sampling complete
Including	71.2	83.2	12.0	10.20	

Table 2: Drill Hole Collar Locations (UTM NAD 83, Zone 18)

Hole	UTM_mE	UTM_mE	Elev._m	Azimuth_°	Dip_°	Length_m
LL-22-070	499406	5096572	345	60	-54	192
LL-22-071	499449	5096554	350	60	-58	192
LL-22-072	499459	5096511	351	60	-55	207
LL-22-073	499480	5096480	348	60	-56	201
LL-22-074	499480	5096480	348	60	-89	102
LL-22-075	499419	5096476	348	60	-53	240
LL-22-076	499367	5096458	339	60	-53	138
LL-22-077	499405	5096441	339	60	-62	126
LL-22-078	499353	5096409	332	60	-55	126
LL-22-079	499353	5096409	332	60	-85	126

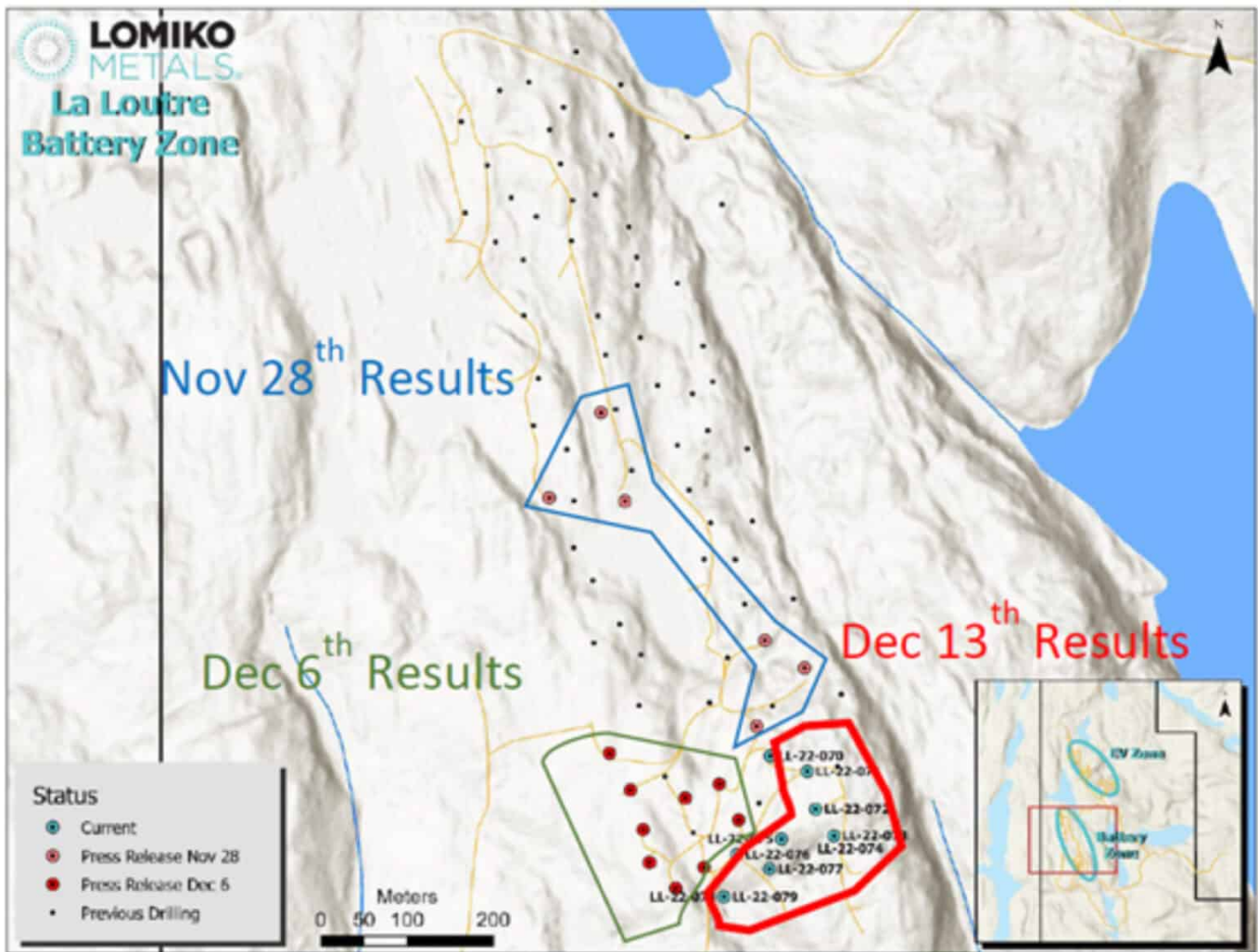


Figure 1: Battery Zone Drill Hole Locations (Photo: Business Wire)

QAQC and Analytical Procedures

The drill core was logged and marked for sampling by a professional geologist. All the core was photographed as part of the logging procedure. Core samples were collected by splitting each sample interval in half lengthwise with a hydraulic core splitter. One half of the interval was returned to the core box, and the other half was placed in a plastic bag with a tag. The tag number was marked in indelible ink on the outside of the bag, and the bag was sealed with a plastic tie-wrap. One certified reference material standard and one blank were included in each batch of 21 samples. For shipping, samples were placed in rice bags that were individually sealed with numbered,

tamper-proof security tags. The rice bags were then placed on wooden pallets, secured with plastic wrapping, and delivered by truck to Manitoulin Transport Inc. for shipping to Activation Laboratories Ltd. (“Actlabs”) in Ancaster, Ontario.

At Actlabs the samples were crushed to 80% passing 2mm and then riffle split to a 250g sub-sample that was pulverized to pulp 95% passing 105µm (Actlabs Code RX1). The sample pulps were then analyzed for graphitic carbon (“Cg”) by mild hydrochloric acid digestion followed by combustion in an infrared induction furnace (Actlabs Code 8Cg). Actlabs is accredited under ISO 9001:2015 registration and is independent of the Company.

Qualified Person

The technical content presented in this press release was reviewed by Mark Fekete, P.Geo. who actively participated in the La Loutre drill program as an independent consultant to the Company as the “Qualified Person” as that term is defined under National Instrument 43-101 – Standards of Disclosure for Mineral Projects.

About Lomiko Metals Inc.

Lomiko Metals has a new vision and a new strategy in new energy. Lomiko represents a company with purpose: a people-first company where we can manifest a world of abundant renewable energy with Canadian and Quebec critical minerals for a solution in North America. Our goal is to create a new energy future in Canada where we will grow the critical minerals workforce, become a valued partner and neighbour with the communities in which we operate, and provide a secure and responsibly sourced supply of critical minerals.

In addition to La Loutre, Lomiko is working with Critical Elements Lithium Corporation towards earning its 70% stake in

the Bourier Project as per [the option agreement announced on April 27th, 2021](#). The Bourier project site is located near Nemaska Lithium and Critical Elements south-east of the Eeyou Istchee James Bay territory in Quebec which consists of 203 claims, for a total ground position of 10,252.20 hectares (102.52 km²), in Canada's lithium triangle near the James Bay region of Quebec that has historically housed lithium deposits and mineralization trends.

About the La Loutre Graphite Project

The Company holds a 100% interest in its La Loutre graphite development project in southern Quebec. The La Loutre project site is located within the Kitigan Zibi Anishinabeg (KZA) First Nations territory. The KZA First Nations are part of the Algonquin Nation and the KZA territory is situated within the Outaouais and Laurentides regions. Located 180 kilometres northwest of Montreal, the property consists of one large, continuous block with 76 mineral claims totalling 4,528 hectares (45.3 km²).

The Property is underlain by rocks belonging to the Grenville Province of the Precambrian Canadian Shield. The Grenville was formed under conditions that were very favourable for the development of coarse-grained, flake-type graphite mineralization from organic-rich material during high-temperature metamorphism.

Lomiko Metals published a [July 29, 2021 Preliminary Economic Estimate \(PEA\)](#) which indicated the project had a 15-year mine life producing per year 100,000 tonnes of graphite concentrate at 95% Cg or a total of 1.5Mt of graphite concentrate. This report was prepared as National Instrument 43-101 Technical Report for Lomiko Metals Inc. by Ausenco Engineering Canada Inc., Hemmera Envirochem Inc., Moose Mountain Technical

Services, and Metpro Management Inc., collectively the Report Authors.

On behalf of the Board,
Belinda Labatte
CEO and Director, Lomiko Metals Inc.

For more information on Lomiko Metals, review the website at www.lomiko.com:

Cautionary Note Regarding Forward-Looking Information

This news release contains “forward-looking information” within the meaning of the applicable Canadian securities legislation that is based on expectations, estimates, projections and interpretations as at the date of this news release. The information in this news release about the Company; and any other information herein that is not a historical fact may be “forward-looking information” (“FLI”). All statements, other than statements of historical fact, are FLI and can be identified by the use of statements that include words such as “anticipates”, “plans”, “continues”, “estimates”, “expects”, “may”, “will”, “projects”, “predicts”, “proposes”, “potential”, “target”, “implement”, “scheduled”, “intends”, “could”, “might”, “should”, “believe” and similar words or expressions. FLI in this new release includes, but is not limited to: the Company’s objective to become a responsible supplier of critical minerals, exploration of the Company’s projects, including expected costs of exploration and timing to achieve certain milestones, including timing for completion of exploration programs; the Company’s ability to successfully fund, or remain fully funded for the implementation of its business strategy and for exploration of any of its projects (including from the capital markets); any anticipated impacts of COVID-19 on the Company’s business objectives or projects, the Company’s financial

position or operations, and the expected timing of announcements in this regard. FLI involves known and unknown risks, assumptions and other factors that may cause actual results or performance to differ materially. This FLI reflects the Company's current views about future events, and while considered reasonable by the Company at this time, are inherently subject to significant uncertainties and contingencies. Accordingly, there can be no certainty that they will accurately reflect actual results. Assumptions upon which such FLI is based include, without limitation: current market for critical minerals; current technological trends; the business relationship between the Company and its business partners; ability to implement its business strategy and to fund, explore, advance and develop each of its projects, including results therefrom and timing thereof; the ability to operate in a safe and effective manner; uncertainties related to receiving and maintaining exploration, environmental and other permits or approvals in Quebec; any unforeseen impacts of COVID-19; impact of increasing competition in the mineral exploration business, including the Company's competitive position in the industry; general economic conditions, including in relation to currency controls and interest rate fluctuations.

The FLI contained in this news release are expressly qualified in their entirety by this cautionary statement, the "Forward-Looking Statements" section contained in the Company's most recent management's discussion and analysis (MD&A), which is available on SEDAR at www.sedar.com, and on the investor presentation on its website. All FLI in this news release are made as of the date of this news release. There can be no assurance that such statements will prove to be accurate, as actual results and future events could differ materially from those anticipated in such statements. Accordingly, readers should not place undue reliance on forward-looking information.

The Company does not undertake to update or revise any such forward-looking statements or forward-looking information contained herein to reflect new events or circumstances, except as may be required by applicable securities laws.

Neither the TSX Venture Exchange nor its Regulation Services Provider (as that term is defined in the policies of the TSX Venture Exchange) accepts responsibility for the adequacy or accuracy of this news release. No stock exchange, securities commission or other regulatory authority has approved or disapproved the information contained herein.

Contacts

Kimberly Darlington

k.darlington@lomiko.com

514-771-3398