

# **Lomiko Announces Further Results From the Exploration Drill Program at La Loutre Graphite Property in Québec, Drills up to 6.00% Cg Over 45.0m Along Southwestern Margin of Battery Zone**

written by Raj Shah | December 6, 2022

December 06, 2022 ([Source](#)) – **Lomiko Metals Inc. (TSX.V: LMR)** (“Lomiko Metals” or the “Company”) is pleased to announce the seventh round of analytical results from the infill and extension exploration drill program at its La Loutre Graphite property, located approximately 180 kilometres northwest of Montréal in the Laurentian region of Québec. The La Loutre graphite project site is located within the Kitigan Zibi Anishinabeg (KZA) First Nations territory.

Belinda Labatte, CEO and Director stated: “We are pleased to see significant intervals encountered in the second batch of results from the Battery Zone, including 10 holes (LL-22-60 to 69) in the south end of the Battery Zone. The assay results further validate the continuity and quality of the mineralization. The best interval of 6.00% Cg over 45.0m from 55.0 to 100.0m is in hole LL-22-062 including 7.41% Cg over 33.0m from 65.5 to 98.5m. We look forward to receiving the results from the remaining 10 holes in the Battery Zone.”

## **Highlights**

Assay results from the second 10 of 26 holes drilled at Battery Zone:

- Consistent, near surface graphite mineralization along the southwest margin of the Battery Zone
- **Strong graphite values and significant widths in all 10 drill holes**
- **Best interval of 6.00% Cg over 45.0m from 55.0 to 100.0m in hole LL-22-062 including 7.41% Cg over 33.0m from 65.5 to 98.5m**
- **Second best interval of 5.62% Cg over 27.0 from 31.5 to 58.5 in hole LL-22-060 including 6.58% Cg over 21.0m from 36.0 to 57.0m**

The drilling was supervised by Québec-based, independent geological consultant Breakaway Exploration Management Inc. and was operated under ECOLOGO requirements and compliance protocols, as Lomiko is ECOLOGO certified. Please see the [press release issued on March 23, 2022](#) for more details about Lomiko's ECOLOGO certification.

The drill program at La Loutre was initiated on May 15, 2022, with the goal to further define the deposit, provide the data needed to increase confidence in the mineral resource and build on the results of the positive Preliminary Economic Assessment ("PEA") for the La Loutre project [as announced in the Company's July 29, 2021, press release](#). Lomiko has retained InnovExplo Inc, a Quebec-based independent consulting firm specializing in geology, resource estimation, mining engineering and sustainable development, to prepare an updated NI 43-101 compliant resource estimate for the La Loutre project following the completion of the 2022 drill program.

The assay results reported in this press release are for 10

holes drilled along the southwest margin of the Battery Zone. These holes were drilled to confirm results of previous drilling and provide better detail in this part of the Battery deposit. Please refer to Table 1 for the weighted averaged graphitic carbon-bearing drill intersections (not true thickness) and Table 2 and Figure 1 for the collar locations referred to in this press release.

Significant intervals of graphite mineralization were intersected in all 10 holes. The best intersection was 6.00 per cent graphitic carbon (“% Cg”) over 45.0 metres (“m”) from 55.0 to 100.0m in hole LL-22-062 including 7.41% Cg over 33.0m from 65.5 to 98.5m. These drill results generally show that the graphite intervals along the western margin, although consistent, are narrower and contain less graphite relative to the center of the Battery zone located further to the northeast, which was expected based on the previous drilling.

Generally, it was noted that the graphite mineralization intersected in the Battery zone is visually more coarse-grained than the graphite mineralization intersected at the recently drilled EV Zone.

<b>Table 1: Weight averaged graphitic carbon-bearing drill intersections (not true thickness)</b>					
<b>Hole</b>	<b>From m</b>	<b>To m</b>	<b>Int. m</b>	<b>% Cg</b>	<b>Notes</b>

LL-22-060	31.5	58.5	27.0	5.62	Sampling complete
Including	<b>36.0</b>	<b>57.0</b>	<b>21.0</b>	<b>6.58</b>	
	89.0	108.5	19.5	3.14	Sampling complete
Including	96.5	105.5	9.0	5.80	
LL-22-061	35.0	77.0	42.0	2.75	Sampling complete
Including	<b>56.0</b>	<b>75.5</b>	<b>19.5</b>	<b>5.41</b>	
LL-22-062	30.5	33.5	3.0	5.16	Sampling complete
	<b>55.0</b>	<b>100.0</b>	<b>45.0</b>	<b>6.00</b>	Sampling complete
Including	<b>65.5</b>	<b>98.5</b>	<b>33.0</b>	<b>7.41</b>	
LL-22-063	9.0	16.5	7.5	2.39	Sampling complete
	59.4	65.4	6.0	1.77	Sampling complete
	75.0	105.0	30.0	3.37	Sampling complete
LL-22-064	104.5	115.0	10.5	4.08	Open above 104.5m; additional sampling underway
LL-22-065	67.0	91.0	24.0	3.73	Sampling complete
Including	<b>67.0</b>	<b>82.0</b>	<b>15.0</b>	<b>5.82</b>	

LL-22-066	16.0	20.5	4.5	4.58	Open above 16.0m; additional sampling underway
	102.5	108.5	6.0	5.18	Open above 102.5m & below 108.5m; additional sampling underway
LL-22-067	11.0	15.5	4.5	4.68	Open above 11.5m; additional sampling underway
	58.0	115.0	57.0	2.63	Sampling complete
Including	<b>59.5</b>	<b>70.0</b>	<b>10.5</b>	<b>5.88</b>	
Including	<b>88.0</b>	<b>101.5</b>	<b>13.5</b>	<b>5.58</b>	
LL-22-068	2.5	15.2	12.7	1.30	Sampling complete
	<b>94.0</b>	<b>103.0</b>	<b>9.0</b>	<b>7.87</b>	Sampling complete
LL-22-069	<b>45.7</b>	<b>57.7</b>	<b>12.0</b>	<b>4.75</b>	Sampling complete
	103.0	125.9	22.9	3.61	Sampling complete
Including	<b>106.0</b>	<b>117.3</b>	<b>11.3</b>	<b>6.94</b>	

<b>Table 2: Drill Hole Collar Locations (UTM NAD 83, Zone 18)</b>						
<b>Hole</b>	<b>UTM_mE</b>	<b>UTM_mE</b>	<b>Elev._m</b>	<b>Azimuth_°</b>	<b>Dip_°</b>	<b>Length_m</b>
LL-22-060	499347	5096540	331	60	-53	129
LL-22-061	499308	5096524	331	60	-52	144
LL-22-062	499246	5096533	325	60	-58	195
LL-22-063	499221	5096576	329	60	-54	192
LL-22-064	499200	5076611	322	60	-53	222
LL-22-065	499329	5096443	329	60	-58	111
LL-22-066	499267	5096449	331	60	-56	132
LL-22-067	499260	5096487	330	60	-52	129
LL-22-068	499296	5096419	329	60	-58	117
LL-22-069	499370	5096498	343	60	-56	129

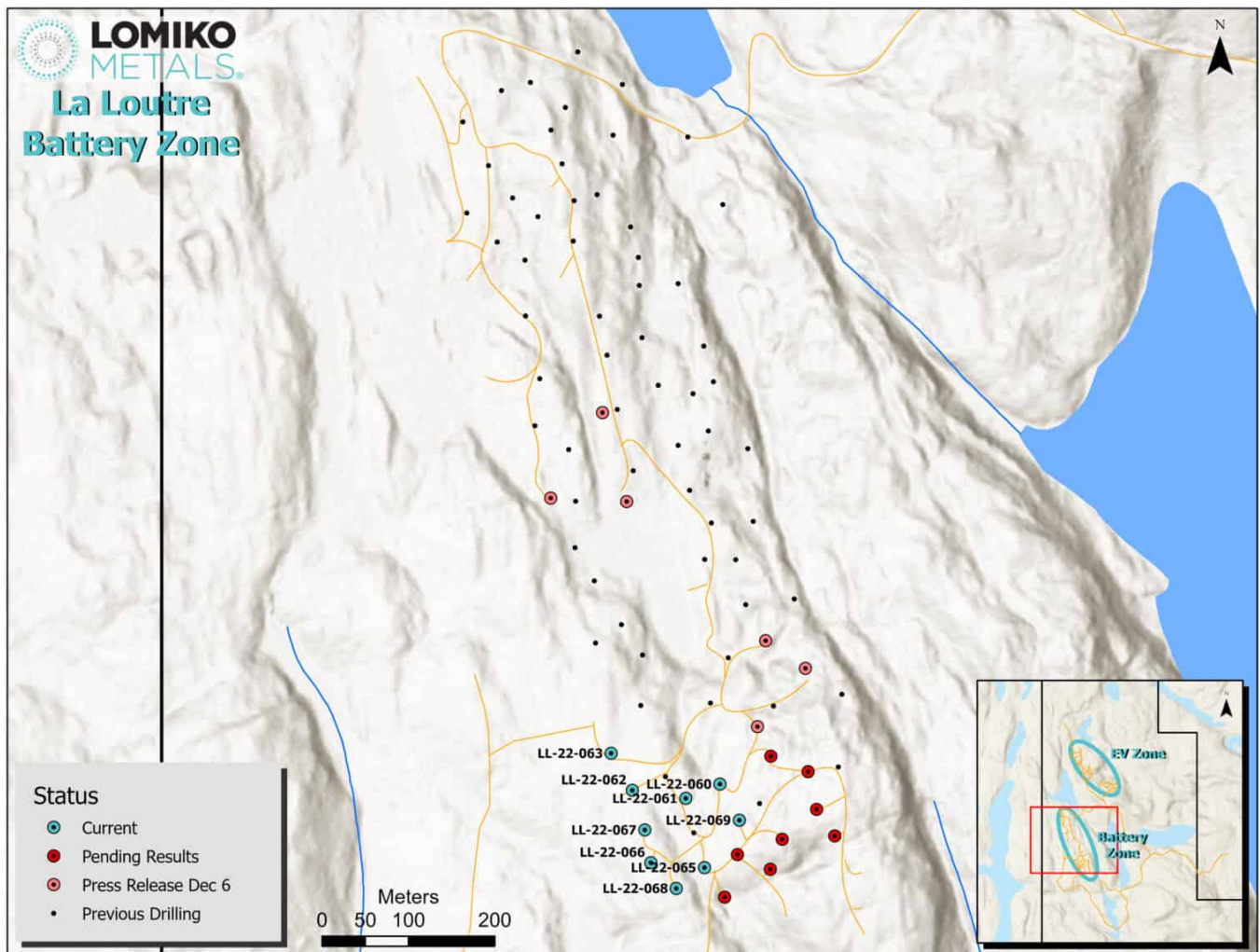


Figure 1 : Battery Zone Drill Hole Locations (Graphic: Business Wire)

## QAQC and Analytical Procedures

The drill core was logged and marked for sampling by a professional geologist. All the core was photographed as part of the logging procedure. Core samples were collected by splitting each sample interval in half lengthwise with a hydraulic core splitter. One half of the interval was returned to the core box, and the other half was placed in a plastic bag with a tag. The tag number was marked in indelible ink on the outside of the bag, and the bag was sealed with a plastic tie-wrap. One certified reference material standard and one blank were included in each batch of 21 samples. For shipping, samples were placed in rice bags that were individually sealed with numbered,

tamper-proof security tags. The rice bags were then placed on wooden pallets, secured with plastic wrapping, and delivered by truck to Manitoulin Transport Inc. for shipping to Activation Laboratories Ltd. (“Actlabs”) in Ancaster, Ontario.

At Actlabs the samples were crushed to 80% passing 2mm and then riffle split to a 250g sub-sample that was pulverized to pulp 95% passing 105µm (Actlabs Code RX1). The sample pulps were then analyzed for graphitic carbon (“Cg”) by mild hydrochloric acid digestion followed by combustion in an infrared induction furnace (Actlabs Code 8Cg). Actlabs is accredited under ISO 9001:2015 registration and is independent of the Company.

### **Qualified Person**

The technical content presented in this press release was reviewed by Mark Fekete, P.Geo. who actively participated in the La Loutre drill program as an independent consultant to the Company as the “Qualified Person” as that term is defined under National Instrument 43-101 – Standards of Disclosure for Mineral Projects.

### **About Lomiko Metals Inc.**

Lomiko Metals has a new vision and a new strategy in new energy. Lomiko represents a company with purpose: a people-first company where we can manifest a world of abundant renewable energy with Canadian and Quebec critical minerals for a solution in North America. Our goal is to create a new energy future in Canada where we will grow the critical minerals workforce, become a valued partner and neighbour with the communities in which we operate, and provide a secure and responsibly sourced supply of critical minerals.

In addition to La Loutre, Lomiko is working with Critical Elements Lithium Corporation towards earning its 70% stake in



the Bourier Project as per [the option agreement announced on April 27<sup>th</sup>, 2021](#). The Bourier project site is located near Nemaska Lithium and Critical Elements south-east of the Eeyou Istchee James Bay territory in Quebec which consists of 203 claims, for a total ground position of 10,252.20 hectares (102.52 km<sup>2</sup>), in Canada's lithium triangle near the James Bay region of Quebec that has historically housed lithium deposits and mineralization trends.

### **About the La Loutre Graphite Project**

The Company holds a 100% interest in its La Loutre graphite development project in southern Quebec. The La Loutre project site is located within the Kitigan Zibi Anishinabeg (KZA) First Nations territory. The KZA First Nations are part of the Algonquin Nation and the KZA territory is situated within the Outaouais and Laurentides regions. Located 180 kilometres northwest of Montreal, the property consists of one large, continuous block with 76 mineral claims totalling 4,528 hectares (45.3 km<sup>2</sup>).

The Property is underlain by rocks belonging to the Grenville Province of the Precambrian Canadian Shield. The Grenville was formed under conditions that were very favourable for the development of coarse-grained, flake-type graphite mineralization from organic-rich material during high-temperature metamorphism.

Lomiko Metals published a [July 29, 2021 Preliminary Economic Estimate \(PEA\)](#) which indicated the project had a 15-year mine life producing per year 100,000 tonnes of graphite concentrate at 95% Cg or a total of 1.5Mt of graphite concentrate. This report was prepared as National Instrument 43-101 Technical Report for Lomiko Metals Inc. by Ausenco Engineering Canada Inc., Hemmera Envirochem Inc., Moose Mountain Technical

Services, and Metpro Management Inc., collectively the Report Authors.

On behalf of the Board,  
Belinda Labatte  
CEO and Director, Lomiko Metals Inc.

### **Cautionary Note Regarding Forward-Looking Information**

This news release contains “forward-looking information” within the meaning of the applicable Canadian securities legislation that is based on expectations, estimates, projections and interpretations as at the date of this news release. The information in this news release about the Company; and any other information herein that is not a historical fact may be “forward-looking information” (“FLI”). All statements, other than statements of historical fact, are FLI and can be identified by the use of statements that include words such as “anticipates”, “plans”, “continues”, “estimates”, “expects”, “may”, “will”, “projects”, “predicts”, “proposes”, “potential”, “target”, “implement”, “scheduled”, “intends”, “could”, “might”, “should”, “believe” and similar words or expressions. FLI in this new release includes, but is not limited to: the Company’s objective to become a responsible supplier of critical minerals, exploration of the Company’s projects, including expected costs of exploration and timing to achieve certain milestones, including timing for completion of exploration programs; the Company’s ability to successfully fund, or remain fully funded for the implementation of its business strategy and for exploration of any of its projects (including from the capital markets); any anticipated impacts of COVID-19 on the Company’s business objectives or projects, the Company’s financial position or operations, and the expected timing of announcements in this regard. FLI involves known and unknown risks, assumptions and other factors that may cause actual results or

performance to differ materially. This FLI reflects the Company's current views about future events, and while considered reasonable by the Company at this time, are inherently subject to significant uncertainties and contingencies. Accordingly, there can be no certainty that they will accurately reflect actual results. Assumptions upon which such FLI is based include, without limitation: current market for critical minerals; current technological trends; the business relationship between the Company and its business partners; ability to implement its business strategy and to fund, explore, advance and develop each of its projects, including results therefrom and timing thereof; the ability to operate in a safe and effective manner; uncertainties related to receiving and maintaining exploration, environmental and other permits or approvals in Quebec; any unforeseen impacts of COVID-19; impact of increasing competition in the mineral exploration business, including the Company's competitive position in the industry; general economic conditions, including in relation to currency controls and interest rate fluctuations.

The FLI contained in this news release are expressly qualified in their entirety by this cautionary statement, the "Forward-Looking Statements" section contained in the Company's most recent management's discussion and analysis (MD&A), which is available on SEDAR at [www.sedar.com](http://www.sedar.com), and on the investor presentation on its website. All FLI in this news release are made as of the date of this news release. There can be no assurance that such statements will prove to be accurate, as actual results and future events could differ materially from those anticipated in such statements. Accordingly, readers should not place undue reliance on forward-looking information. The Company does not undertake to update or revise any such forward-looking statements or forward-looking information contained herein to reflect new events or circumstances, except

as may be required by applicable securities laws.

***Neither the TSX Venture Exchange nor its Regulation Services Provider (as that term is defined in the policies of the TSX Venture Exchange) accepts responsibility for the adequacy or accuracy of this news release. No stock exchange, securities commission or other regulatory authority has approved or disapproved the information contained herein.***

## **Contacts**

For more information on Lomiko Metals, review the website at [www.lomiko.com](http://www.lomiko.com) or

please contact:

Kimberly Darlington

[k.darlington@lomiko.com](mailto:k.darlington@lomiko.com)

514-771-3398