

CORPORATE PRESENTATION



ALSET ENERGY
— CORP —

Forward Looking Statements

During the course of this presentation, Alset Energy Corp. may make forward-looking statements with regard to the company's projects and or business plans. Statements may also be made with regard to the company's business strategy, products, partners, and market position which could be construed as forward-looking. Forward-looking statements are subject to risk and uncertainties that could cause results to be materially different than expectations. The presentation has been prepared by management of Alset Energy Corp, and does not represent a recommendation to buy or sell these securities. Investors should always consult their investment advisors prior to making any Investment Decision.

Qualified Person

Clinton Barr, P.Geo, Vice President of Exploration for Alset, is the qualified person responsible for the technical content of this presentation.



ALSET ENERGY
— CORP —

TSX-V: ION

Tesla wants
North American Sources of Lithium



ALSET ENERGY
— CORP —

TSX-V: ION

It is Economics and Environmental

Tesla is a green aware company and
committed to green and economically
smart decisions



ALSET ENERGY
— CORP —

TSX-V: ION

Clayton Valley, Nevada is Close to Tesla Gigafactory

But the production is too small and
there are water issues constraining
production growth



ALSET ENERGY
— CORP —

TSX-V: ION

Where to go beyond Nevada

Hard rock sources don't meet the greenest solution as it takes a lot more to process.
Tesla needs a lithium brine source
in North America.



ALSET ENERGY
— CORP —

TSX-V: ION

Central Mexico

Next nearest lithium brine source beyond Nevada is South America. The Central Mexican Plateau could be a gamechanger.

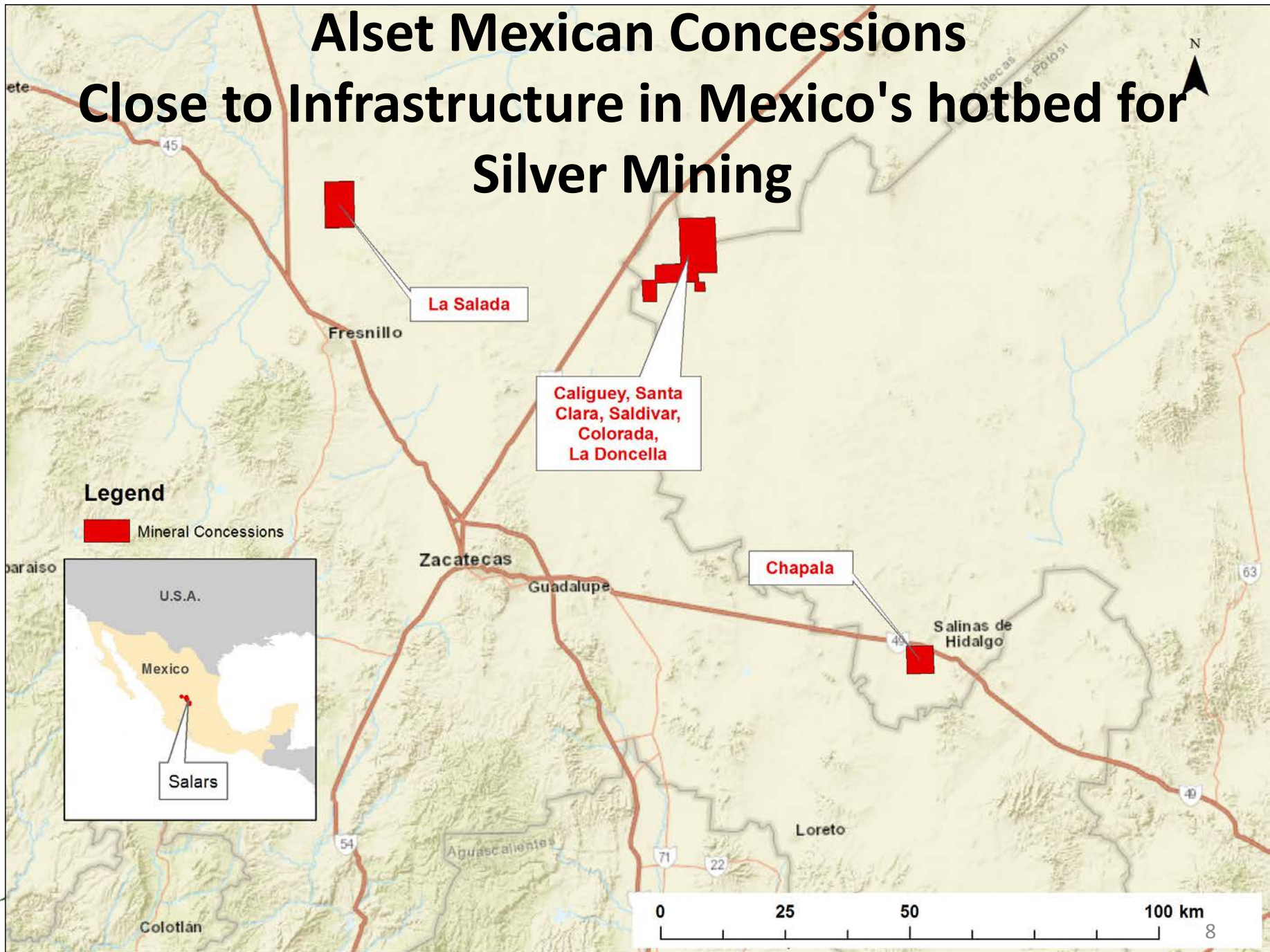


ALSET ENERGY
— CORP —

TSX-V: ION

Alset Mexican Concessions

Close to Infrastructure in Mexico's hotbed for Silver Mining



Lithium Brines in Central Mexico

The Deal:

Alset can earn up to 100% interest in 7 lithium (Li)/potash (K) brine systems

- Alset pays property taxes (US\$112k)
- Makes staged cash payments of US\$210k over 5 years
- Alset grants a 2.25% NSR, of which 1% can be repurchased for US\$250k.

Alset 1st mover in promising central Mexican Plateau Li/K brine district

Proven Li/K enrichment + past salt production = Li production potential



ALSET ENERGY
— CORP —

TSX-V: ION

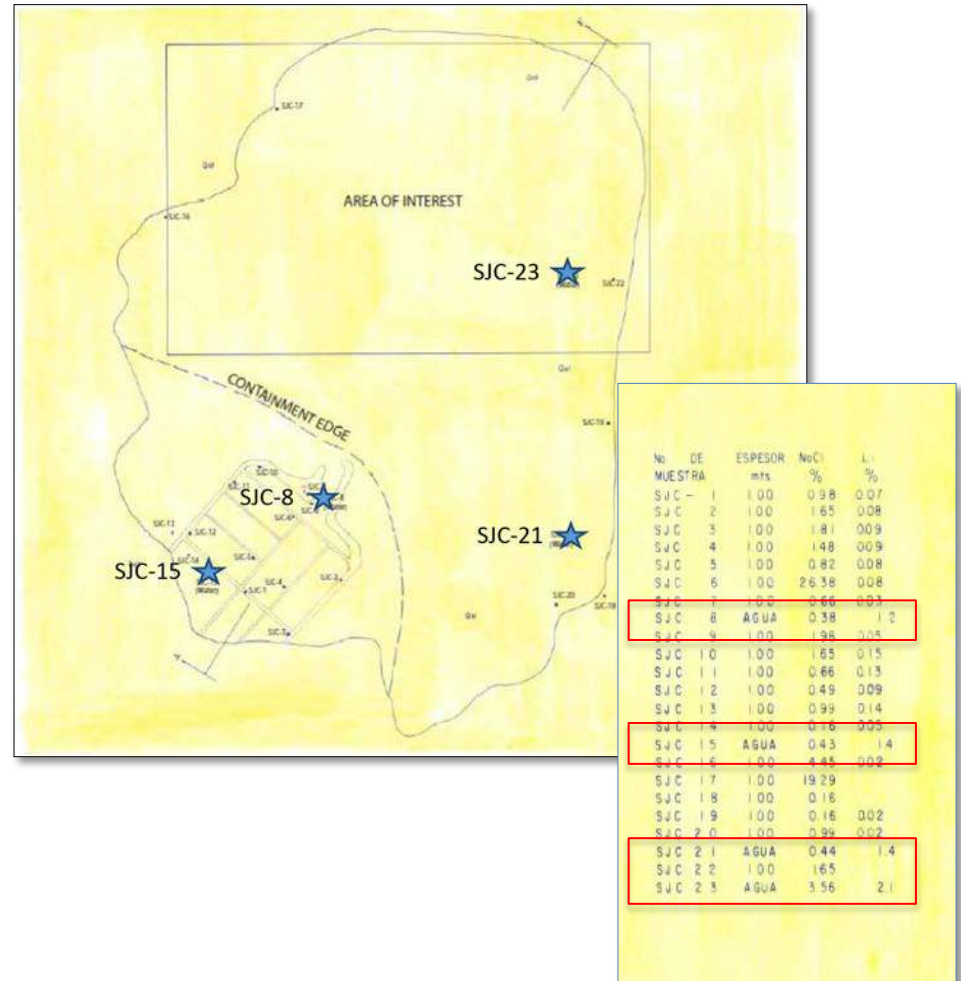
Discovery Timeline

- 1652** - Colonial Spanish produced salt from brines in region
- 1837** - Began salt production by pumping brines to surface for evaporative concentration
- 1912** - Salt production 50 tons per day with capacity “for double that”
- 1989** - Mexican Geologic Survey (MGS) found Li in wells up to 230-300mg/L
- 1992** - MGS found Li in salt evaporation lagoons at 12,000-21,000 mg/L
- 2012** - Prior owner reported sediments with up to 2,590 ppm Li & 9% K
- 2016** - **Alset** determines that the Li and K are in brines, not solids



Caligüey 1992-Salt & surface Brines

- MGS evaluated common salt production from the Caligüey salar.
- Brine pumped to surface evaporation ponds from 20m deep wells
- Brine samples taken from the edge of a central lagoon contained 1.2% to 2.1% (12,000 to 21,000 mg/l) Li.
- Concentrated by evaporation.
- Sediment samples matched 2012 results.

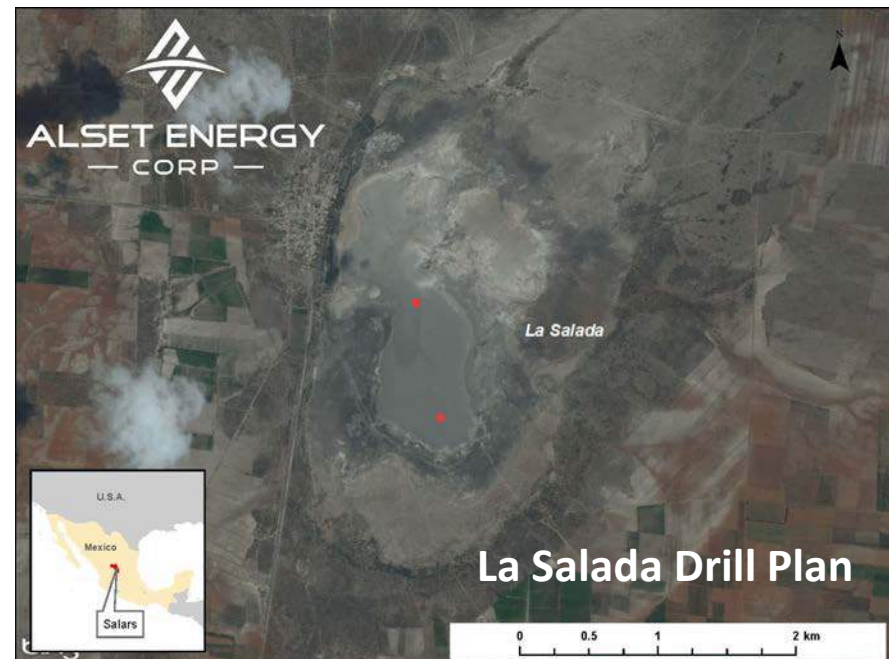
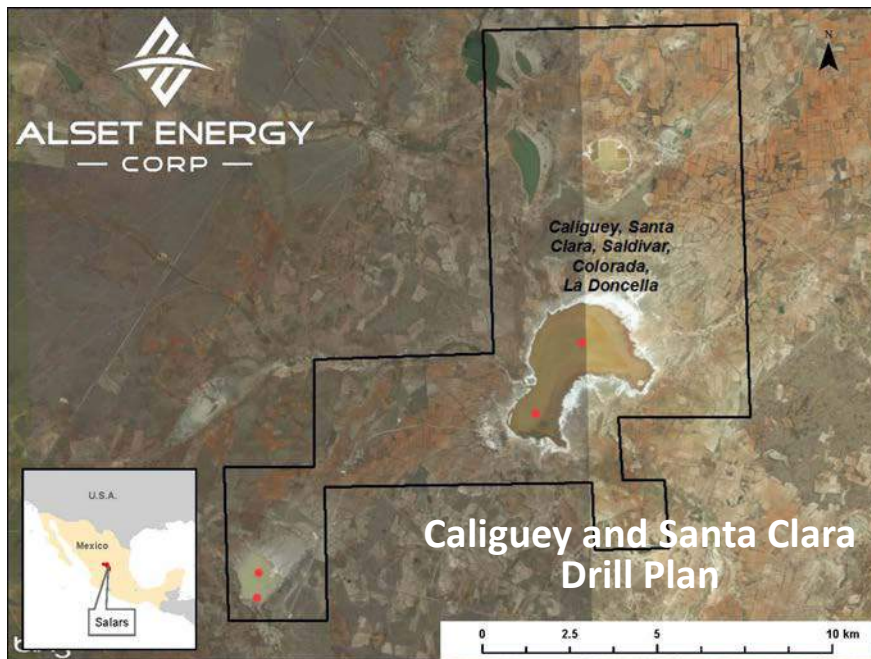


ALSET ENERGY
— CORP —

TSX-V: ION

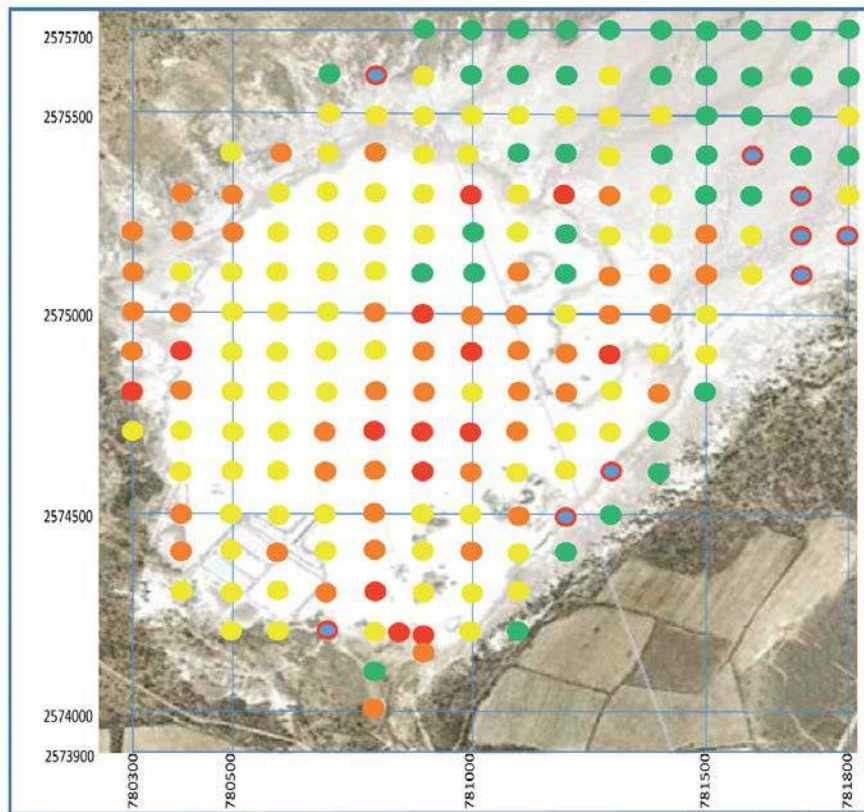
Initial Drilling Strategy - Salars

- Currently permitting two reverse circulation (RC) boreholes into each of three salars, testing for flow and grade
- Three target salars:
 - Caligüey – former salt ops, high Li values in lagoon
 - Salada – highest grade in sediment sampling
 - Santa Clara – largest salar



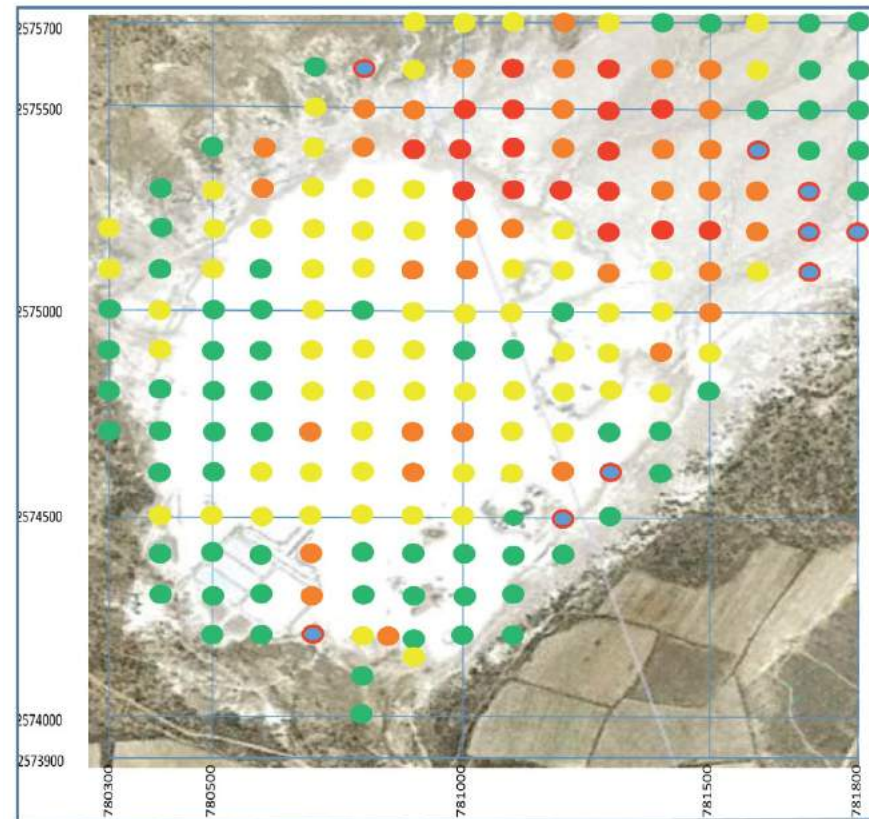
Caligüey Salar

Li + K in Sediment Samples



LITIO MEX S.A. DE C.V.
17/JUNE / 2010

LITIUM EXPLANATION



LITIO MEX S.A. DE C.V.
17/JUNE / 2010

POTASSIUM EXPLANATION



SPATIAL DISTRIBUTION FOR LITHIUM VALUES AT SALAR No. 2 (CALIGÜEY),

SPATIAL DISTRIBUTION FOR POTASSIUM VALUES AT SALAR No. 2, (CALIGÜEY)

Salt Production via wells Saldivar and Colorada



ALSET ENERGY
— CORP —

TSX-V: ION

Alset has Lithium & Graphite Covered

Pre-development brine & hard-rock lithium deposits & graphite

Mexico

Virgin lithium brine district, with potash kicker – currently permitting for drilling

Ontario, *Lithium, Wisa Lake, Fort Frances*

Hard rock: historical resource* of 330,000t @1.15% Li₂O in spodumene, open, drill-ready

Ontario, *Graphite, Champion Project, Kenora*

High-grade flake graphite, trenched, sampled, drill-ready

*(*non NI43-101 compliant)*



ALSET ENERGY
— CORP —

TSX-V: ION

What's Next?

2016

October Sampling for grade comparison to historical work and lithium recovery from historic brine production area

November Drilling permit applications submitted

2017

Jan-Feb Receive drill permits

Feb-March **Drilling & evaluation of results**

April Resource definition drilling

June Maiden NI43-101 resource preparation & report

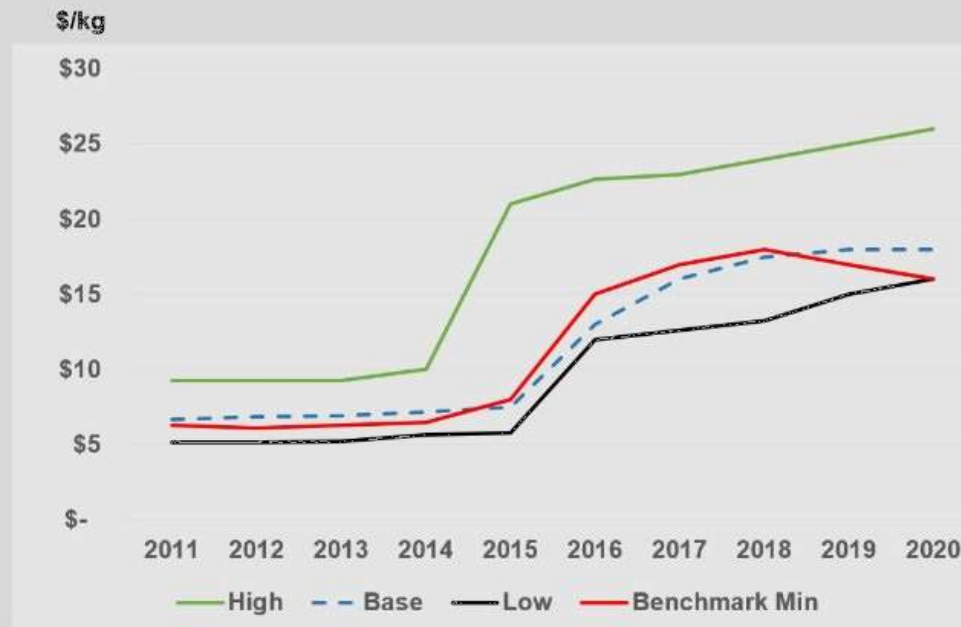


ALSET ENERGY
— CORP —

TSX-V: ION

Why Lithium?

Lithium Hydroxide Price History and Projection High, Base and Low Price vs Benchmark Minerals - High



Source: Global Lithium LLC, Benchmark Minerals



ALSET ENERGY
— CORP —

TSX-V: ION

Share Structure & Trading

- 43.68 million shares issued and outstanding
- Fully diluted: 48.15M
- Insider ownership approx 10%



ALSET ENERGY
— CORP —

TSX-V: ION

For more information, contact:

Allan Barry Laboucan

President & CEO

604-505-4753

allan@alsetenergy.ca



Head Office

684 Squier St

Thunder Bay, ON

Canada P7B 4A8

Phone: (807) 475-7474

Fax: (807) 475-7200



ALSET ENERGY
— CORP —

TSX-V: ION