

Berkwood Resources Ltd. (TSX.V-BKR) is a Canadian junior exploration company based in Vancouver, BC dedicated to the acquisition, exploration and development of **Precious Metal** and **Graphite** projects. The Company is currently advancing two properties in **Canada**.

PROSPECT VALLEY GOLD PROPERTY – BC, CANADA

- Located 30km west of Merrit, BC. 3 hours drive from Vancouver.
- 10,871 Ha. In advanced stages of exploration. 100% owned by Berkwood.
- Drilling has outlined an extensive low grade epithermal gold system.
- Indications of potential for additional and higher grade mineralization.



LAC GUÉRET EAST GRAPHITE PROPERTY – QC, CANADA

- Located in the Côte Nord region, QC. 3 hours drive from Baie-Comeau.
- **3,402 Ha consisting of 63 contiguous claim blocks.**
- Adjacent and to the east of Mason Graphite's significant Lac Guéret Deposit.
- **Graphite zones in the region range from 3% to 40% Cg** (Carbon as Graphite).



MANAGEMENT TEAM

R. BRIAN BUCHANAN	CEO, President & Director
SHIRAZ (RAZ) HUSSEIN	CFO, Secretary & Director
GEORGE GORZYNSKI, P.Eng.	Director
BRIAN V. HALL, M.Sc., P.Geo.	Director

CONTACT INFORMATION

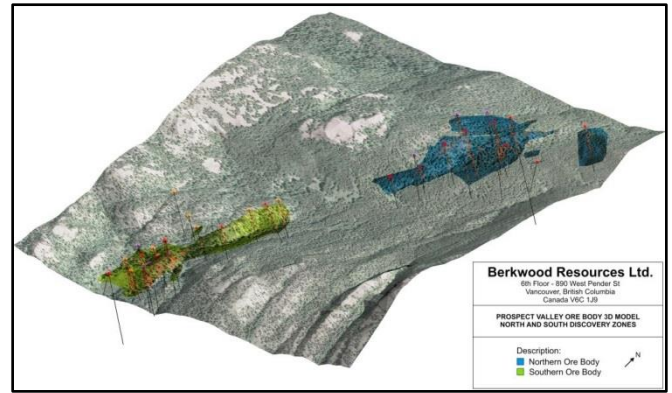
6th Floor - 890 West Pender Street
 Vancouver, BC V6C 1J9
P: +1 (604) 662-7455
E: info@berkwoodresources.com

THE PROSPECT VALLEY GOLD PROPERTY is located three hours drive from Vancouver. The property is situated in the Spences Bridge Gold Belt, close to good infrastructure and logistics.

Drilling to date has outlined an inferred NI 43-101 compliant Mineral Resource totaling 166,000 ounces grading 0.511 g/t gold in 10,077,000 metric tonnes above a cut-off of 0.30g/t gold at the combined **Discovery South** and **Discovery North Zones**. Zones remain open for expansion. Alteration studies indicate potential for high grade mineral system at depth.

The 2012 Field Work Program extended the gold-in-soil anomalous zone, 1 km to the northeast, along the projected Discovery Zone Trend.

Several areas of anomalous gold have been outlined for a follow up trenching program, with the objective of generating targets for drill testing.

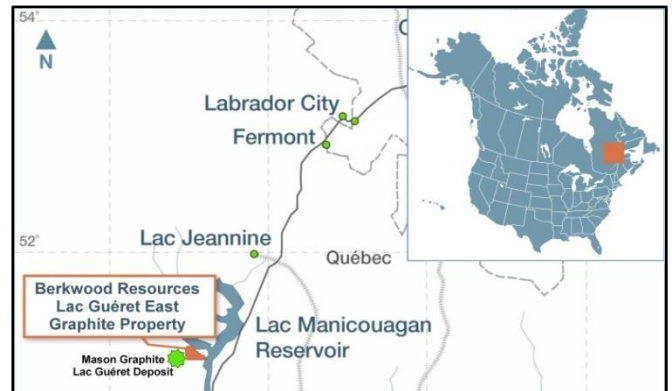


THE LAC GUÉRET EAST GRAPHITE PROPERTY is situated in the geological Grenville Province. Access is provided via a major secondary road and numerous tertiary and forest roads that traverse the property.

The property is adjacent to the eastern edge of Mason Graphite's significant Lac Guéret Deposit which has an NI 43-101 compliant mineral resource estimate with measured & indicated mineral resources of approximately 7.6 million tonnes grading 20.4% Cg.

The **Lac Guéret East Graphite Property** shares a similar prospective geological environment as Mason Graphite's Lac Guéret Property, including along strike stratigraphic units and structures.

During prospecting the first Graphite bearing zone on the property has been discovered, which is traceable at surface extends a minimum of 55 metres, has a mean true width of 4-5 metres and is trending NE.



In this presentation the Prospect Valley mineral resource estimates were taken from a technical report (posted on www.sedar.com) by Henry J. Awmack, P.Eng. of Equity Exploration Consultants Ltd. and Gary H. Giroux, P.Eng. of Giroux Consultants Limited, both Qualified Persons under the definition of Canadian National Instrument 43-101. George Gorzynski, P.Eng., a Director of Berkwood and a Qualified Person under the definition of Canadian National Instrument 43-101, is responsible for the Prospect Valley Property technical information other than information directly related to the mineral resource estimates, and for the Lac Guéret Project and Peter Lake Project information.