



**Berkwood Resources Ltd. (TSX.V-BKR)** is a Canadian junior exploration company based in Vancouver, BC dedicated to the acquisition, exploration and development of **Base Metal, Precious Metal and Graphite** projects. The Company is currently advancing three properties in **Canada**.

### PROSPECT VALLEY GOLD PROPERTY – BC, CANADA

- Located 30km west of Merrit, BC. 3 hours drive from Vancouver.
- **10,871 Ha. In advanced stages of exploration. 100% owned by Berkwood.**
- Drilling has outlined an extensive low grade epithermal gold system.
- **Indications of potential for additional and higher grade mineralization.**



### PETER LAKE COPPER PROPERTY - QC, CANADA

- Located 90km north of Mont-Laurier QC. 4 hours drive from Montreal.
- **5,086 Ha. Two mineralized zones identified to date.**
- Historical grab samples of up to 31% Cu and 2.5% Ni.
- **Berkwood check assays of up to 22.8% Cu in grab samples.**



### LAC GUÉRET EAST GRAPHITE PROPERTY – QC, CANADA

- Located in the Côte Nord region, QC. 3 hours drive from Baie-Comeau.
- **3,402 Ha consisting of 63 contiguous claim blocks.**
- Adjacent and to the east of Mason Graphite's significant Lac Guéret Deposit.
- **Graphite zones in the region range from 3% to 40% Cg** (Carbon as Graphite).



#### MANAGEMENT TEAM

R. BRIAN BUCHANAN	CEO, President & Director
SHIRAZ (RAZ) HUSSEIN	CFO, Secretary & Director
GEORGE GORZYNSKI, P.Eng.	Director
BRIAN V. HALL, M.Sc., P.Geo.	Director

#### CONTACT INFORMATION

6th Floor - 890 West Pender Street  
 Vancouver, BC V6C 1J9  
**P: +1 (604) 662-7455**  
**E: [info@berkwoodresources.com](mailto:info@berkwoodresources.com)**

**THE PROSPECT VALLEY GOLD PROPERTY** is located three hours drive from Vancouver. The property is situated in the Spences Bridge Gold Belt, close to good infrastructure and logistics.

Drilling to date has outlined an inferred NI 43-101 compliant Mineral Resource totaling 166,000 ounces grading 0.511 g/t gold in 10,077,000 metric tonnes above a cut-off of 0.30g/t gold at the combined **Discovery South** and **Discovery North Zones**. Zones remain open for expansion. Alteration studies indicate potential for high grade mineral system at depth.

The 2012 Field Work Program extended the gold-in-soil anomalous zone, 1 km to the northeast, along the projected Discovery Zone Trend.

Several areas of anomalous gold have been outlined for a follow up trenching program, with the objective of generating targets for drill testing.



**THE PETER LAKE COPPER PROPERTY** is situated within the Mont Laurier Terrane in the Central Grenville Province. Easy access is provided via gravel and paved roads direct to the property.

There are two mineralized zones identified to date. The **Peter Lake North Showing** is a continuous Cu–Ni mineralized structure that has been traced over 300 metres in length averaging 0.5 to 3 metres true width with grab samples grading from 0.4% to 22.8% Cu. An additional 800 metres length is postulated from field observations and geophysics. The **Peter Lake South Showing** is a mineralized zone exposed over an area of 25 x 40 metres at surface. The two mineralized zones can be traced over a strike length of 3 km and remain open in both directions and at depth.

Operating in the exploration friendly jurisdiction of Quebec allows for up to 40% reimbursement of exploration costs.



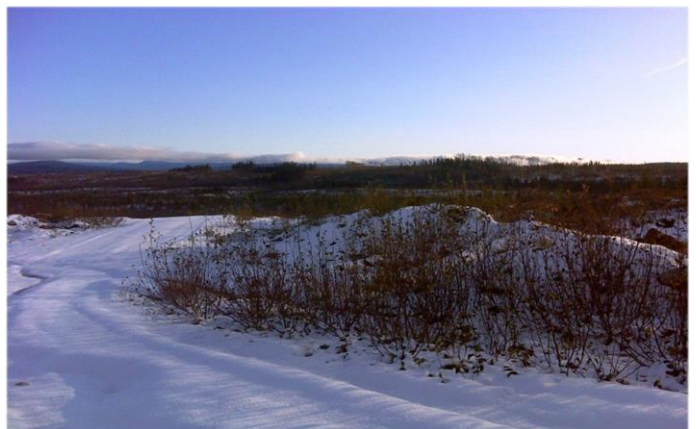
**THE LAC GUÉRET EAST GRAPHITE PROPERTY** is situated in the geological Grenville Province. Access is provided via a major secondary road and numerous tertiary and forest roads that traverse the property.

The property is adjacent to the eastern edge of Mason Graphite's significant Lac Guéret Deposit which has an NI 43-101 compliant mineral resource estimate with measured & indicated mineral resources of approximately 7.6 million tonnes grading 20.4% Cg.

The **Lac Guéret East Graphite Property** shares a similar prospective geological environment as Mason Graphite's Lac Guéret Property, including along strike stratigraphic units and structures.

During prospecting the first Graphite bearing zone on

the property has been discovered, which is traceable at surface extends a minimum of 55 metres, has a mean true width of 4-5 metres and is trending NE.



In this presentation the Prospect Valley mineral resource estimates were taken from a technical report (posted on [www.sedar.com](http://www.sedar.com)) by Henry J. Awmack, P.Eng. of Equity Exploration Consultants Ltd. and Gary H. Giroux, P.Eng. of Giroux Consultants Limited, both Qualified Persons under the definition of Canadian National Instrument 43-101. George Gorzynski, P.Eng., a Director of Berkwood and a Qualified Person under the definition of Canadian National Instrument 43-101, is responsible for the Prospect Valley Property technical information other than information directly related to the mineral resource estimates, and for the Lac Guéret Project and Peter Lake Project information.